

UE8040-PF

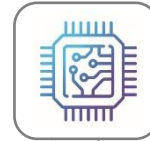
Normal grade UF element for RO pretreatment

CSM[®]

- High Permeate Flux
- MWCO 50K - 100K Da



Food



Semiconductor



Industrial

SPECIFICATIONS

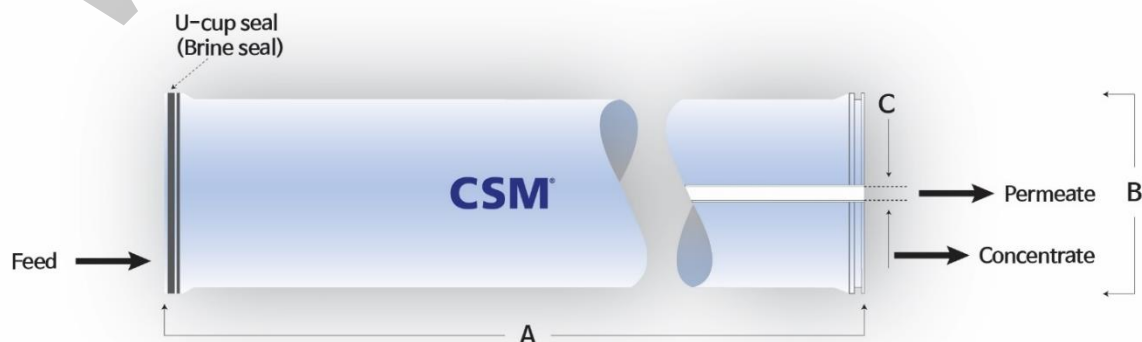
General Features

Permeate Flow Rate	16,000 GPD (60.6 m ³ /day)
Molecular Weight Cut Off	50K – 100K (Daltons)
Effective Membrane Area	400 ft ² (37.2 m ²)
Membrane Type	Thin-Film Composite
Membrane Material	Polysulfone (PSF)
Element Configuration	Spiral-Wound, FRP Wrapping

Test Conditions: pure water at 20 psig (0.14 MPa) applied pressure; 77°F (25°C); pH 6.5–7.0; Permeate flow rate for each element may vary +25 / -25%.

Dimensions and Weight

Model Name	A	B	C	Weight	Part Number	
					Inter-Connector	Brine Seal
UE8040-PF	40.0 inch (1,016 mm)	7.9 inch (200 mm)	1.125 inch (28.6 mm)	15kg	SWA01049	SWA01043



1. Each membrane element supplied with one interconnector (coupler) and four O-rings.
2. All UE8040 elements fit nominal 8.0 inch (203.2 mm) I.D. pressure vessels.

Toray Advanced Materials Korea Inc.

For more information on our products, company and regional contacts, please visit our website at www.csmfilter.com.

Product Specification Sheet / Model UE8040-PF



UE8040-PF

Normal grade UF element for RO pretreatment

CSM®

APPLICATION DATA

Operating Limits

Max. Pressure Drop / Element	15 psi (0.10 MPa)
Max. Pressure Drop / 240" Vessel	60 psi (0.41 MPa)
Max. Operating Pressure	600 psi (4.14 MPa)
Max. Feed Flow Rate	75 gpm (17.0 m ³ /hr)
Min. Concentrate Flow Rate	16 gpm (3.6 m ³ /hr)
Max. Operating Temperature	113°F (45°C)
Operating pH Range	2.0 – 11.0
CIP pH Range	1.0 – 13.0
Max. Turbidity	1.0 NTU
Max. SDI (15 min)	5.0

GENERAL HANDLING PROCEDURES

- Elements contained in the boxes must be kept dry at room temperature (7–32°C; 40–95°F) and should not be stored in direct sunlight.
- For WET-TYPE, the preservative solution (1% sodium metabisulfite solution) is added to prohibit the growth of micro-organisms.
- Permeate from the first hour of operation should be discarded.
- Salt rejection would be stabilized within 48 hours of continuous operation depending on feedwater and operating conditions, but may take over a week for dry elements.
- Keep elements moist at all times after initial wetting.
- Avoid excessive pressure and flow spikes.
- Only use chemicals compatible with the membrane elements and components. Use of such chemicals may void the element limited warranty.
- Permeate pressure must always be equal or less than the feed/concentrate pressure. Damage caused by permeate back pressure voids the element limited warranty.
- The element shell is FRP(Fiber Reinforced Plastic). Be aware of glass fiber strands and use safety equipment.

Toray Advanced Materials Korea Inc.

For more information on our products, company and regional contacts, please visit our website at www.csmfilter.com.

Product Specification Sheet / Model UE8040-PF



PT Watermart Perkasa
Email: sales@water.co.id Phone: +62-21-316-1671
Whatsapp (text only): +62815-8609-3500
Website: www.water.co.id